

CORRIGENDUM**SUNG YONG KIM***Marine Physical Laboratory, Scripps Institution of Oceanography, University of California, San Diego, La Jolla, California***BRUCE D. CORNUELLE***Climate, Atmospheric Science, and Physical Oceanography, Scripps Institution of Oceanography, University of California, San Diego, La Jolla, California***ERIC J. TERRILL***Marine Physical Laboratory, Scripps Institution of Oceanography, University of California, San Diego, La Jolla, California*

DOI: 10.1175/2009JPO4013.1

There was an error in Fig. 4 of Kim et al. (2009). Figures 4a and 4c were switched in the original figure. The correct figure and caption appear below. However, the explanation of the figure in the text itself was correctly described and does not need revising.

The authors regret any inconvenience this error may have caused.

REFERENCE

Kim, S. Y., B. D. Cornuelle, and E. J. Terrill, 2009: Anisotropic response of surface currents to the wind in a coastal region. *J. Phys. Oceanogr.*, **39**, 1512–1533.

Corresponding author address: Sung Yong Kim, Scripps Institution of Oceanography, 9500 Gilman Dr., La Jolla, CA 92093-0213.
E-mail: syongkim@mpl.ucsd.edu

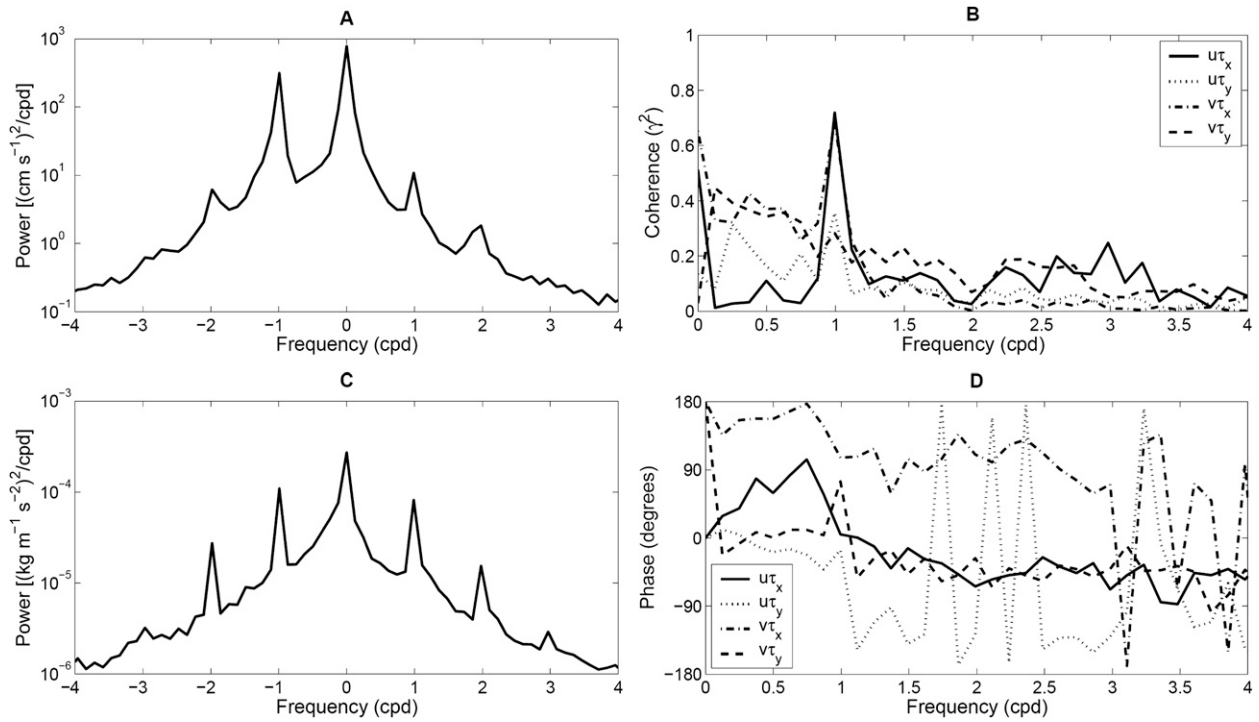


FIG. 4. The rotary power spectra of the (a) detided surface current and (c) wind are estimated from 90 subsamples with the same record length (8.12 days) and averaged across each frequency. (b) Coherence and (d) phase between the surface current and wind stress are estimated using the same spectra.